

HIGH & LOW-KEY PHOTOGRAPHY

AGENDA

- High-Key Photography
- Low-Key Photography
- Minimalism

HIGH-KEY PHOTOGRAPHY

“A style of photography that uses unusually bright lighting to reduce or completely blow out dark shadows in the image. High key images usually lack dark tones.”

HIGH-KEY PHOTOGRAPHY

- “Multiple powerful sources of lighting are strategically positioned to eliminate harsh shadows from images, giving them a very light and optimistic feel.”
- “High-key photography aims to limit the lighting ratio in a shot, resulting in images characterized by an abundance of light tones and a lack of most shadows.”
- “High-key images are those that have few shadows and have the subject set against a very bright background. High-key images are often set against over-exposed backdrops.”

HIGH-KEY PORTRAIT



HIGH-KEY PORTRAIT



HIGH-KEY ANIMALS



HIGH-KEY ANIMALS
GEORGE WHEELHOUSE



HIGH-KEY WILDLIFE

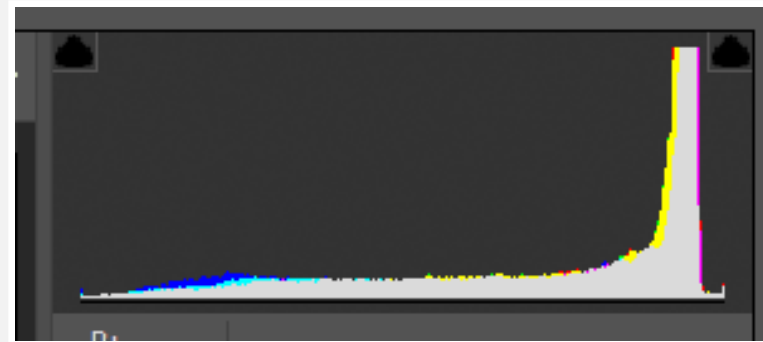


HIGH-KEY ARCHITECTURE



HIGH-KEY DO'S

- DO-
- Shoot against a light or white background
- Consider B&W
- Expose To The Right-ETTR



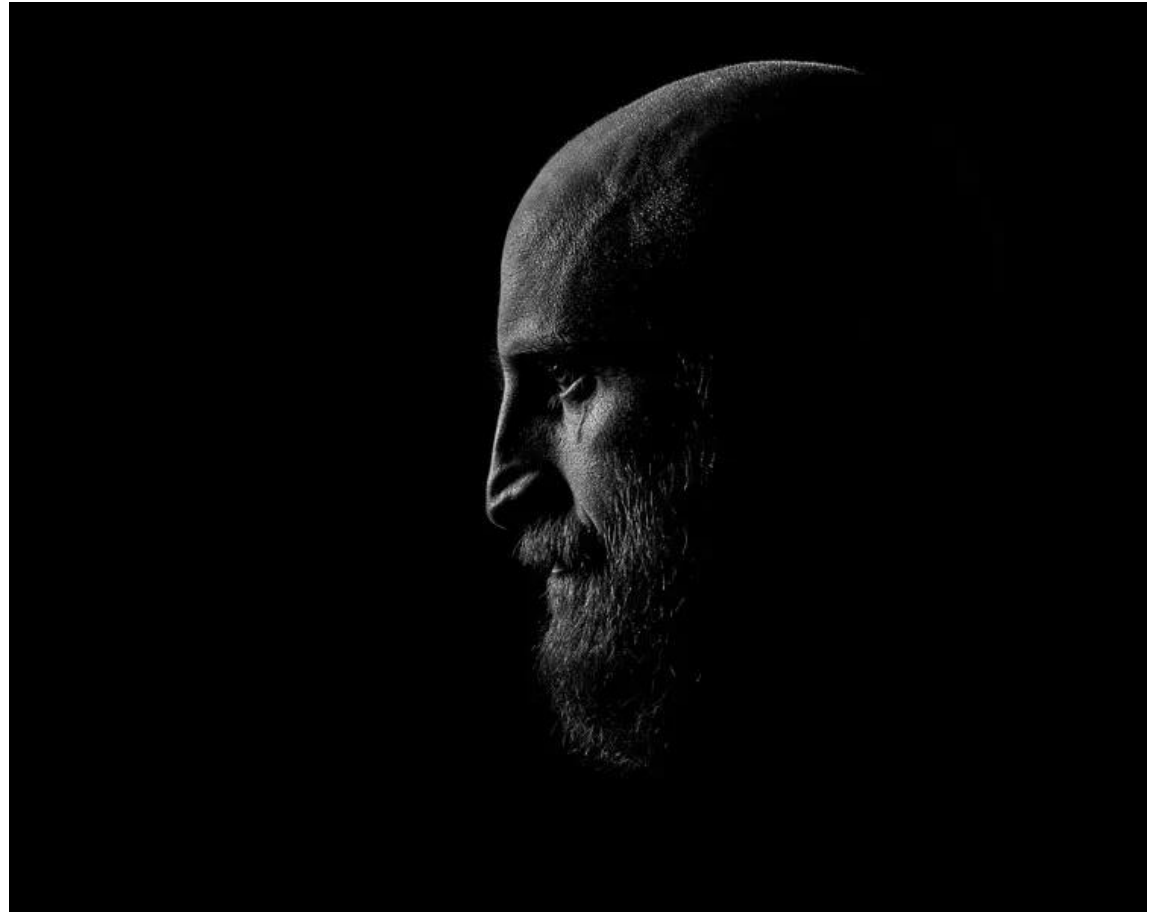
LOW-KEY PHOTOGRAPHY

“Consists of shooting dark colored scenes by lowering or dimming the “key” or front light illuminating the scene and emphasizing natural or artificial light only on specific areas of the frame. This style is usually used to create a mysterious atmosphere.”

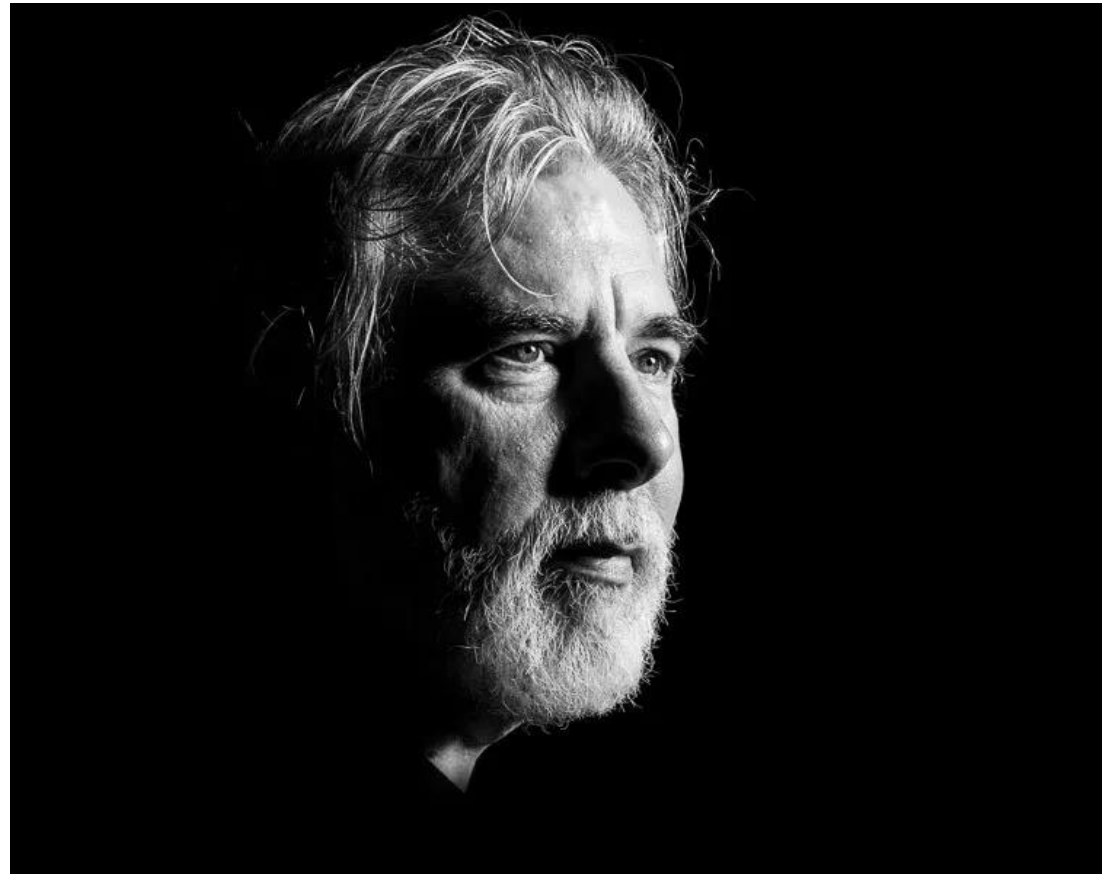
LOW-KEY PHOTOGRAPHY

- “A style of photography that involves shooting dark scenes with the goal of drawing attention to the illuminated subject.”
- “Low-key photography is a type of photography that uses mostly dark tones to produce high contrast, dramatic images.”
- “Low-key photography refers to dark-toned images that emphasize natural or artificial light only on specific areas in the frame to create striking contrasts, which convey atmosphere and mood.”

LOW-KEY PORTRAIT



LOW-KEY PORTRAIT



LOW-KEY PORTRAIT



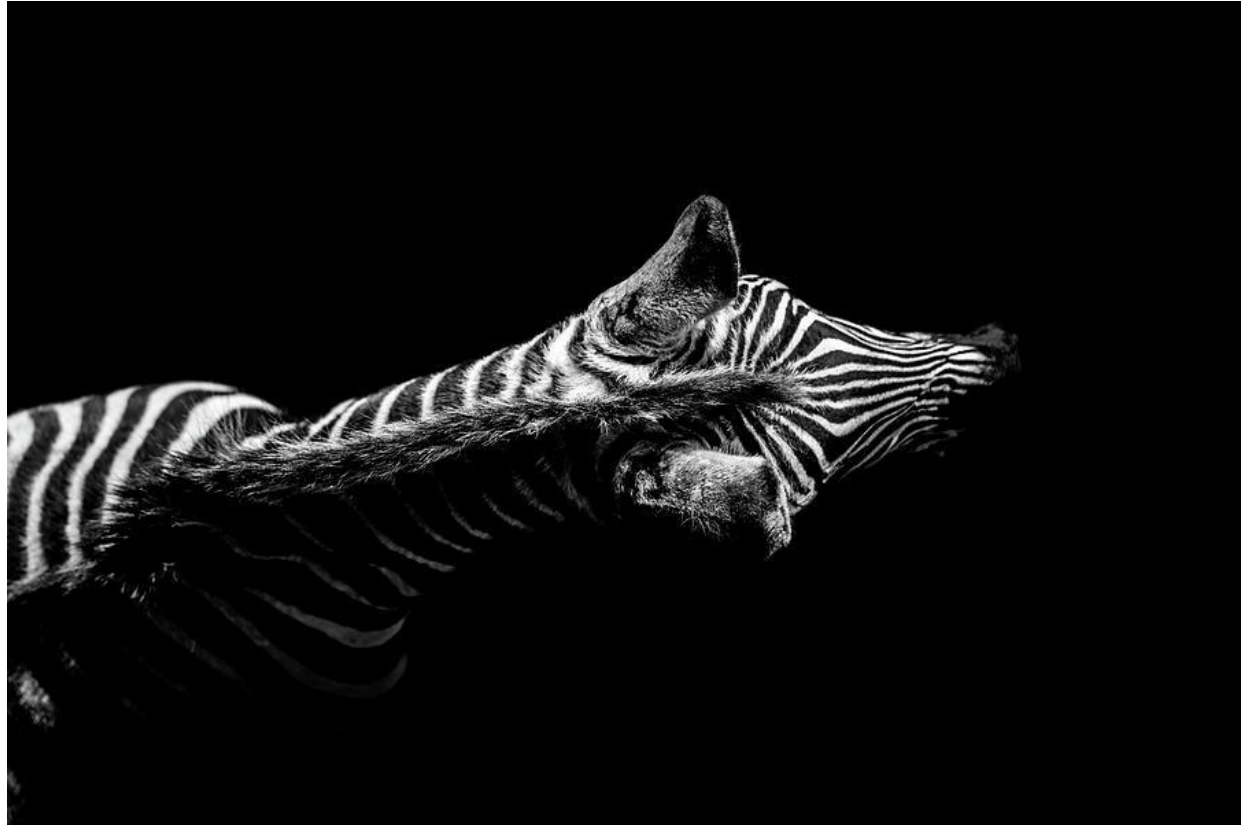
LOW-KEY ANIMALS
GEORGE WHEELHOUSE



LOW-KEY ANIMALS
GEORGE WHEELHOUSE



LOW-KEY ANIMALS
GEORGE WHEELHOUSE



LOW-KEY LANDSCAPE



LOW-KEY DO'S

- DO-
- Shoot against a dark background
- Consider B&W
- Try single-light portraits



SINGLE-LIGHT PORTRAITS

MINIMALISM

“Minimalism is distinguished by austere simplicity. It emphasizes sparseness and careful composition, shying away from an overabundance of color, patterns or information.”

MINIMALISM

- “A style of photography that uses simplicity, sparsity, and careful composition to draw the viewer's eye to a subject.”
- “Minimalist photography is about stripping a subject down to its most elegant essence. A photograph that cuts through the clutter by emphasizing the essentials, including clean lines and empty spaces.”
- “Minimalist photography is a form of photography that is distinguished by extreme simplicity. It focuses solely on the smallest number of objects, and it's normally composed in a clean, clinical way with very little differences in the colors and tones of the image.”

MINIMALIST-ANIMALS

MADS PETER IVERSEN



MINIMALIST-WILDLIFE
DAVID XU

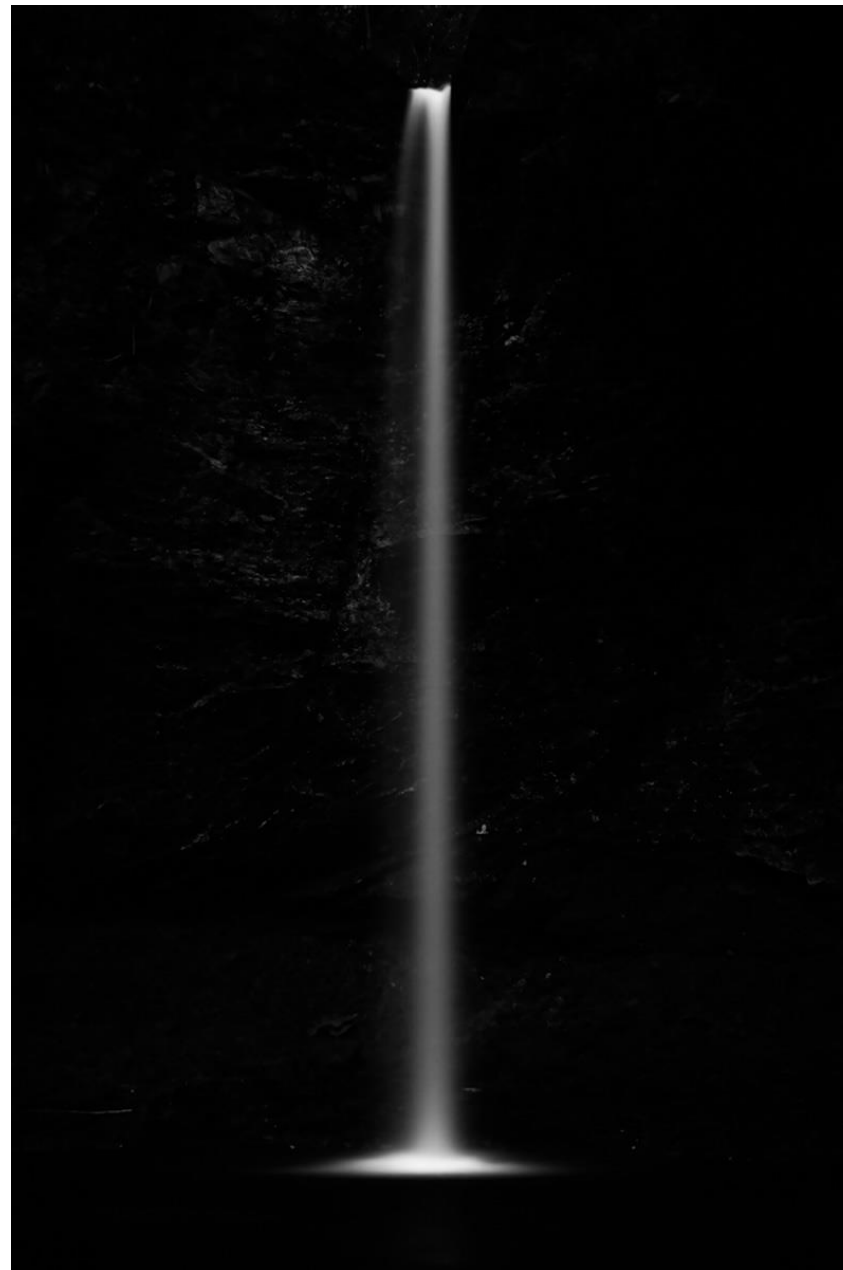


MINIMALIST-FLOWER

ALEX GREENSPHUN



MINIMALIST-LANDSCAPE
MASAHIRO HIROIKE



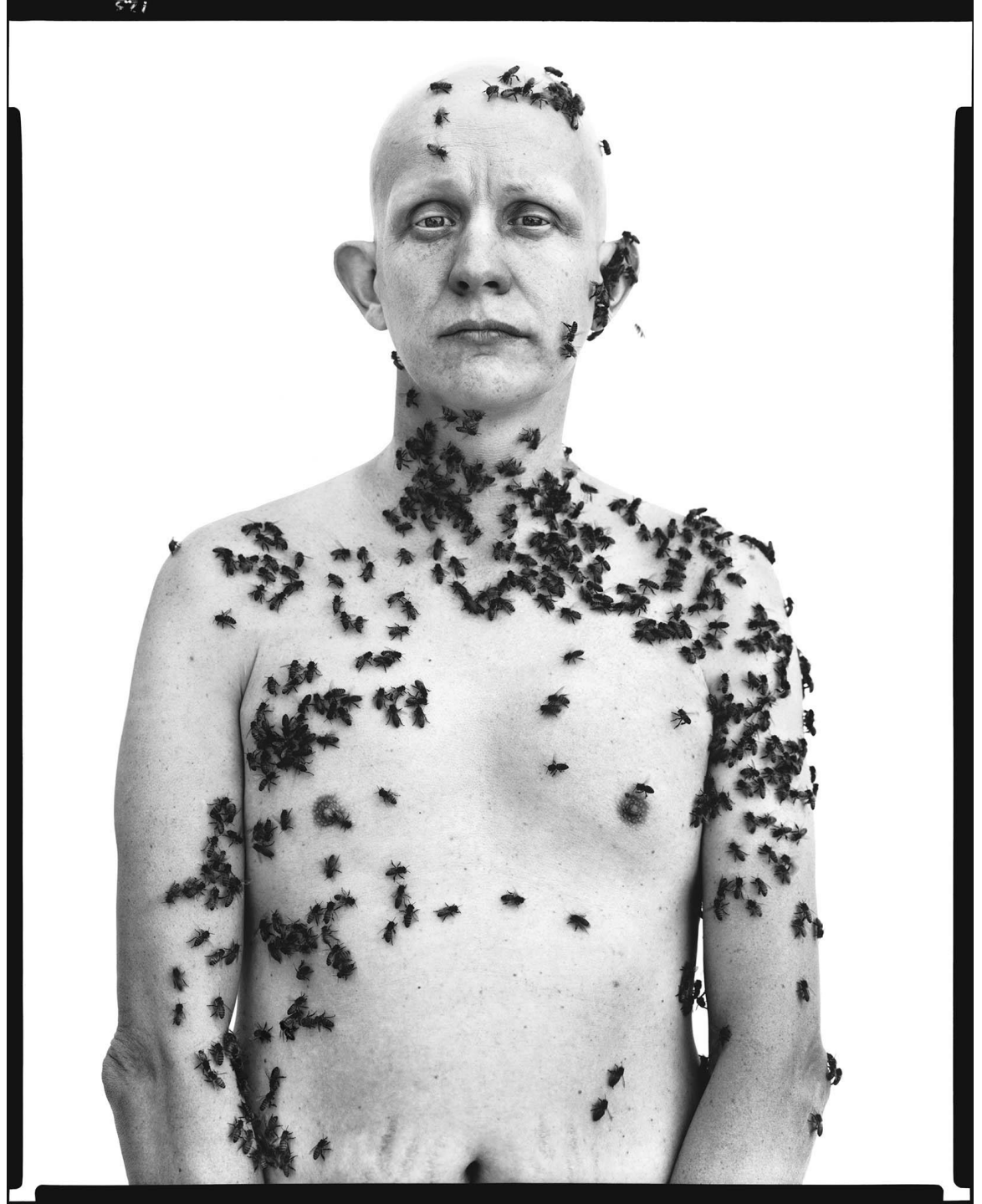
MINIMALIST-ARCHITECTURE
GEE HURKMANS



CAROL CRITTENDON,
BARTENDER
BUTTE, MONTANA
1981



RONALD FISCHER- BEE KEEPER,
DAVIS, CALIFORNIA
1981



QUESTIONS?